

The Sentinel logo features the word "Sentinel" in a bold, teal, sans-serif font. A stylized eye icon, composed of concentric circles and a central dot, is positioned above the letter 'i'.The IBM Maximo logo consists of the IBM logo (eight horizontal stripes) in blue, followed by the word "maximo" in a lowercase, bold, sans-serif font. A registered trademark symbol (®) is located at the top right of the word.The background of the top half of the page features a teal world map with glowing white lines connecting various points. In the foreground, a laptop is open, with glowing white lines emanating from its screen. The overall color scheme is teal and white.

REAL TIME APPLICATION PERFORMANCE **MONITORING** AND **DIAGNOSIS**

Maximo normally performs a fundamental operational role for an organisation and, due to its business importance, it is usually critical that the production system responds quickly enough and is available 100% of the time.

This is normally the case when Maximo is first released into a production environment. However, evidence from many of our clients shows that response times can degrade suddenly or over a period of time. Also, system failures, or the need for system restarts, may happen intermittently or become a regular occurrence.

Sentinel from Reflective Solutions is the only monitoring solution designed specifically for Maximo. The tool is a result of Reflective Solutions' partnerships, firstly with MRO and now with IBM, along with the realisation that Maximo production performance and stability problems are not a rarity. When these problems occur, they usually have a significant negative impact on the business.

Sentinel is different from other monitoring solutions. Not only does it monitor Maximo's availability, correctness and performance, but crucially, it also monitors every aspect of the underlying system. This functionality ensures that Sentinel identifies the cause of a problem the moment it occurs, allowing IT teams to immediately focus on resolving the problem. This provides the assurance that system problems are minimised and will not go undetected, user communities are satisfied and business efficiency is improved.

**Unparalleled monitoring, diagnosis and alerting
at an affordable price.**

The Reflective Solutions logo features a circular arrangement of blue and white dots to the left of the text "REFLECTIVE solutions" in a sans-serif font.The Fields Consulting logo consists of a 3D isometric graphic of blue and white cubes to the left of the text "Fields Consulting" in a bold, sans-serif font. Below this, the text "Asset Management - ERP - GIS" is written in a smaller, italicized font.



IMMEDIATE DIAGNOSIS

- Performance and system information correlated in real time through highly configurable GUI
- Instant diagnosis of causes of any detected problem



SENTINEL ALERTING FACILITY

- Real time alerting
- Configurable to raise alerts exactly to customisable specifications



ADVANCED MONITORING FEATURES

- Monitoring of underlying systems and infrastructure
- Monitoring of every step of every transaction



RESULTS ANALYSIS AND HISTORICAL DATA

- Detailed historical data from user and system perspectives
- Detailed management information
- Customisable reporting, graphs, tables
- Trend analysis
- Useful in providing SLA verification

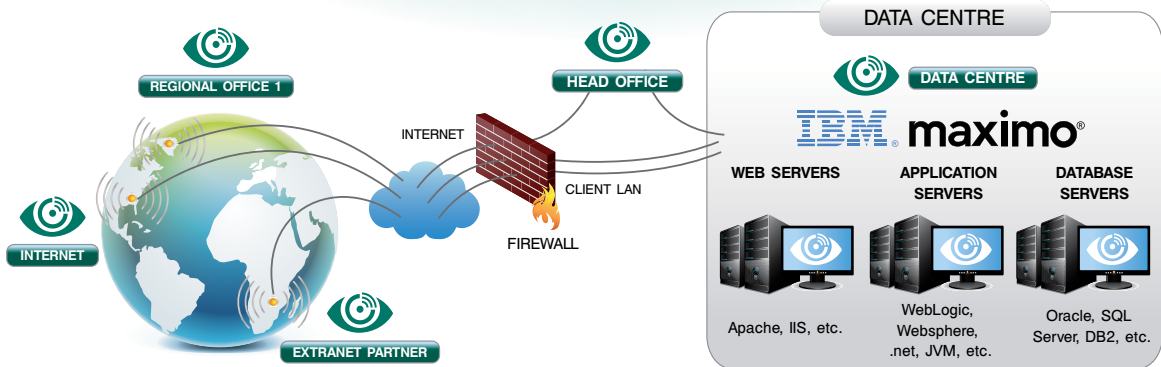
Run-time Monitoring Configuration



Maximo Availability and Response Time Monitoring



Underlying System Monitoring



Real-time Alerting and Analysis of Maximo and System Information



Sentinel is available as software or as a Service